

## What's in the box?

- iBoost Personal Hotspot
- iBoost Active WiFi Antenna
- 5m White Network Cable
- Multi-Function Suction Bracket (in two parts)
- Instruction Leaflet
- iBoost Regulated Power Supply & Panel Injector

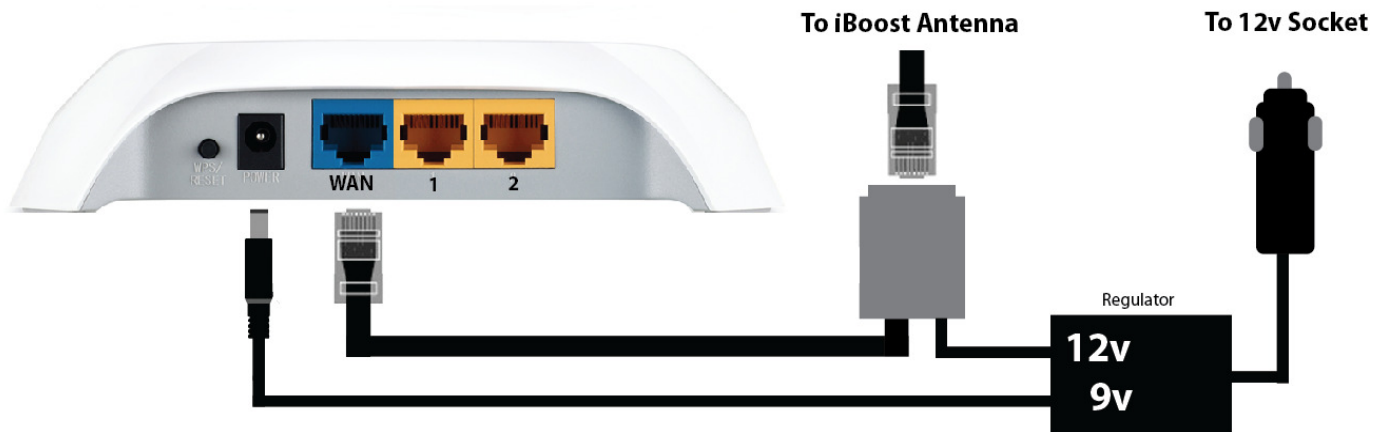
Thank you for purchasing an iBoost from Motorhome WiFi. Please take some time to read about the components and how they connect together, before attempting to use the system via your computer, tablet or phone.

## Connecting Your System



The iBoost Personal Hotspot (*pictured left*) broadcasts a secure local WiFi signal to allow you to connect your devices wirelessly within your motorhome. This network is broadcast as **MotorhomeWiFi**, followed by a number to help identify your hotspot if other iBoost's are nearby. **Your wireless security key is printed on the reverse, in the bottom box marked Wireless Password / PIN.**

The system is powered by a specially designed regulated power injector which serves to power both the hotspot and the active antenna panel from one 12v cigarette socket. A 240v adapter is available to purchase separately if required. Begin by connecting the black power connector into the socket marked power on the back of the Personal Hotspot. The short male end of the grey network cable, which is part of power supply, is then connected into the blue WAN socket on the back of the hotspot as per the image below. The rear of the hotspot has two holes to allow it to be wall mounted if required.



The external active antenna panel can then be connected to the system using the 5m white network cable. Connect one end into the grey female network socket which forms part of the power supply, as illustrated above. To connect to the other end to the antenna, remove the weatherproof cover from the bottom of the unit by pressing the button on the reverse and sliding off the panel to reveal the LAN network socket (*pictured right*). Once the cable is connected and the weatherproof panel replaced, you do not have to disconnect this end when disassembling the system in the future.



Ensure all of the components are connected together before connecting the power cable to your 12v supply.

**Important Note:** Do not press the **WPS/RESET** button on the back of the hotspot or the antenna panel for more than 5 seconds, doing so will delete the iBoost's configuration and render the system inoperable. Turning the system on and off will perform a refresh and reset of the system should the system become unresponsive.

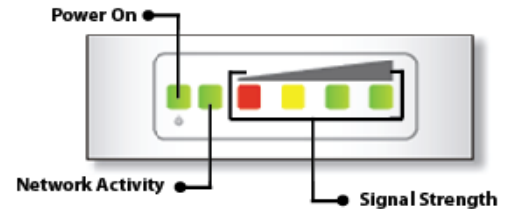
## iBoost Active External Antenna



The business end of the system is the powerful active directional antenna. To ensure that the antenna remains weatherproof, ensure the cable exits the bottom of the unit.

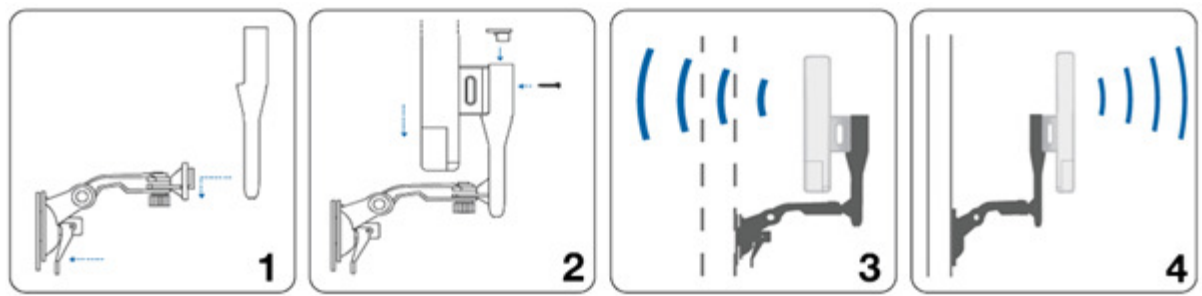
The front of the antenna is the flat face and this is where it picks up WiFi signals from. Being a directional unit, it focuses its intensity in one direction, making it more powerful than an omni-directional (pole) antenna. Directing the antenna towards the source of the signal gives the best performance and the web interface will assist you in doing this.

There are 6 LED's on the back of the antenna. The first LED indicates that the unit is turned on, the second flashes when information is being passed to and from the Personal Hotspot. The last 4 LED's act as a signal strength meter and will only illuminate once you have successfully connected to a suitable hotspot using the web interface. This then allows you to position the antenna outside of your vehicle if you wish without having to use your computer for guidance.



## 2-Way Suction Bracket

The suction bracket allows the antenna to be mounted on the side or roof of your vehicle, or reversed so that the antenna can be placed inside on a window facing outwards. The thumb screw can be removed and reversed. You may wish to hand-hold the antenna while locating and connecting to a network before choosing where to mount it.



- 1.) Secure the rectangular backing panel to the suction base of the mount by offering it up and pressing down. It can be fixed in either direction depending on if you want the antenna to face outwards or inwards.
- 2.) Secure the iBoost antenna by guiding the rear white mount in between the black bracket. You may permanently secure this with the cap and screw (provided) or leave this off for quick assembly and removal.
- 3.) Position the antenna on a window facing outwards, press the centre to create a seal and fold lever to secure.
- 4.) Position the antenna on the side of your vehicle, press the centre to create a seal and fold lever to secure.

## Getting Started

- 1.) Connect the cables as shown on page 1 and power on the system by connecting the cigarette cable to a suitable power outlet in your vehicle. The green LED's should now illuminate on the Personal Hotspot and the green power LED should also illuminate on the iBoost antenna. Allow the system 15-30 seconds to set itself up and self-test before attempting to make a connection.
- 2.) Using your computer or tablet, connect to the wireless hotspot that has become available named "MotorhomeWiFi" in the same way you would usually connect to a wireless. **Your wireless security key is printed on the reverse of the hotspot, in the bottom box marked Wireless Password / PIN.**
- 3.) Once connected, open your web browser. Using your address bar navigate to the following address, made up of numbers and dots: **10.20.30.40**. Ensure that you have not typed this into the search bar or that your browser hasn't inserted 'www' before the numbers as this is not required.



4.) When the MotorhomeWiFi login screen loads up you will be required to enter a username and password. Enter both **mhwh** for the username and **mhwh** for the password fields (all lower case). The system will log in and you will be presented with the navigation bar across the top of the screen. You will only normally need to access either **MAIN** or the **WIRELESS** menus – the rest can be disregarded.

5.) To begin the process of searching for a suitable network to connect to, select **WIRELESS** from the menu.



6.) On the next screen labeled 'Basic Wireless Settings' press the button next to the field SSID labelled **SELECT**.

The 'Basic Wireless Settings' screen shows a 'Wireless Mode' dropdown set to 'Station' and an 'SSID' input field. To the right of the SSID field is a button labeled 'Select...'. This button is highlighted with a red rectangular box.

7.) A new screen will pop up and a Site Survey will be carried out. This means that the antenna is scanning for wireless networks and will report back as to what it has been able to detect in the direction the antenna is facing. The screen (*pictured below*) reports the name of the network (SSID), the type of encryption used (if the network does not require a password, this will be listed as 'None') and the strength of the signal.

The lower the first figure listed in the 'Signal / Noise' column the better the signal will be. As a rule of thumb a reliable connection can be obtained from a network displaying a signal strength of -80 or less.

Site Survey

Scanned Frequencies:  
2.412GHz 2.417GHz 2.422GHz 2.427GHz 2.432GHz 2.437GHz 2.442GHz 2.447GHz 2.452GHz 2.457GHz 2.462GHz 2.467GHz 2.472GHz

|                                  | MAC Address       | SSID          | Device Name | Encryption | Signal / Noise, dBm | Frequency, GHz | Channel |
|----------------------------------|-------------------|---------------|-------------|------------|---------------------|----------------|---------|
| <input checked="" type="radio"/> | 00:18:4D:68:58:D4 | BT FON        |             | None       | -58 / -90           | 2.462          | 11      |
| <input type="radio"/>            | 00:02:6F:AE:36:BC | BT OpenZone   |             | None       | -51 / -90           | 2.462          | 11      |
| <input type="radio"/>            | 80:B6:86:C0:1C:34 | MotorhomeWiFi |             | WPA2       | -86 / -95           | 2.412          | 1       |
| <input type="radio"/>            | 00:1D:68:EE:0A:13 | Netgear       |             | WPA        | -87 / -94           | 2.437          | 6       |

Selectable SSID's must be visible and have compatible channel bandwidth and security settings

Lock to AP Select Scan

8.) You may find it helpful at this point to hand hold the antenna either up through a rooflight, out through a window or windscreen or temporarily mount it if you wish. You may adjust the antenna in any direction and press **SCAN** (bottom right) at any time which will re-scan the available networks. As you adjust the antenna you will notice that some networks appear and disappear and the signal strength will alter.

9.) Once you have identified a wireless network you wish to attempt to connect to, press the select button on the far left hand side of that row and then press the button on the bottom right labelled **SELECT**.

10.) On pressing **SELECT** the Site Survey window will close and the network name will now be listed in the **SSID** box show at step 6. If a type of encryption other than 'None' was listed previously you will now be required to enter the relevant passkey in the 'Wireless Security' section at the bottom of the screen.

#### Wireless Security

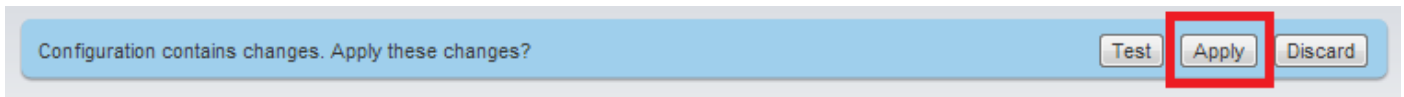
Security: WPA2-AES

WPA Authentication: PSK

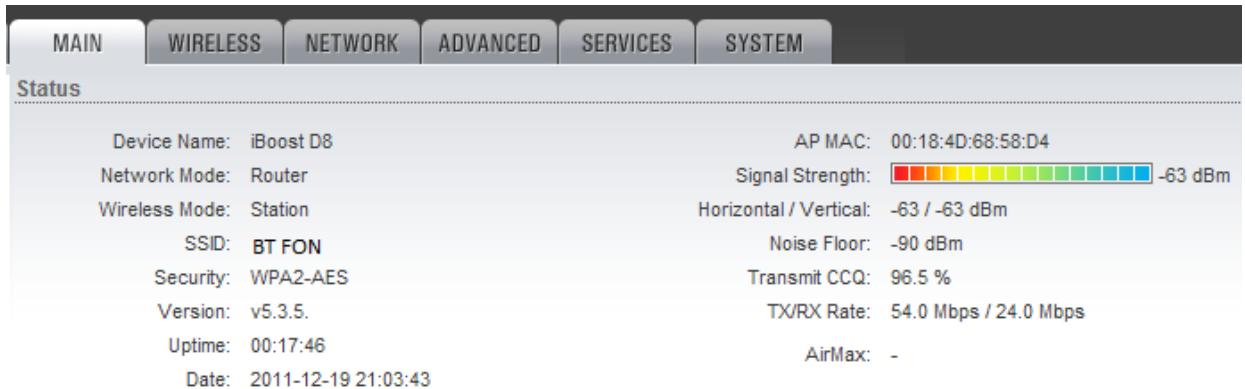
WPA Preshared Key: PASSKEY ☒ Show

**Tip:** Tick **SHOW** to display the password as you type it, rather than it be obscured by stars.

- 11.) Once you are happy with the chosen network and passkey you have provided press **Change** at the bottom right of the screen. A blue bar will flash up at the top of the screen asking you to confirm. Now press **APPLY**.



- 12.) The iBoost will now attempt to connect to the chosen network. You may find the system to be unresponsive for up to 15 seconds while this connection attempt is made and the settings are being updated.
- 13.) Navigate to the **MAIN** screen. If the connection has been successful the signal strength will be displayed both on this screen and on the LED single strength meter on the back of the iBoost antenna, allowing you to make any adjustments to the direction of the antenna so the strength is the maximum possible.



- 14.) If a connection was not possible then no signal strength will be displayed. You may attempt to re-establish a connection to the same network again by pressing **DHCP Client** at the bottom of the screen and then press **REFRESH**. Perhaps adjust the antenna slightly and ensure that the password that you entered on the **WIRELESS** page is correct (if applicable). If a connection is not successful you can then repeat steps 6.) onwards to attempt to establish a connection to a different network. Should you be on the fringe of the reception area the adjustment or positioning of the antenna will be key in trying to overcome this.
- 15.) Once a connection is successful you should now be able to access the internet through your web browser as usual. If the hotspot you have connected to requires a web based login (such as BT Fon or Caravan Club) it will be displayed in your browser when you attempt to access Google or similar. You may now share the internet connection with other wireless devices without having to go through any further setup process.

## Notes on Operation

The power cable provided serves to both power and protects the system. Cutting this cable or powering the system by any other means may void your warranty. A 240v mains adapter is available to purchase if required. Should the power LED's fail to illuminate on the reverse of the antenna panel, check the cable matches the diagram on page 1.

This system is configured to comply with the maximum permissible power output for the UK and Europe. While it is possible to increase the power of the device by choosing a deregulated country (such as USA) on the Wireless Screen it the responsibility of the user to ensure that the device is operated within local laws of the country it is being used.

Each system is set up, configured and tested by us prior to dispatch and is known to be working. **Please do not alter additional settings in the interface or press the reset buttons on the back of the antenna or hotspot.** We can provide recovery instructions on request or can reconfigure the system on your behalf for a small fee should the system fail to operate as a result of altering the configuration. Please contact us for more details.

**For more information visit us online at [www.motorhomewifi.com](http://www.motorhomewifi.com)**