

HYMER



Hymermobil ML-I

Milestones of innovation.

Hymermobil ML-I highlights

Premium integrated model under 3.5 tons.

The new Hymermobil ML-I is a classically stylish and agile integrated model in the 3.5-ton class with a Mercedes-Benz chassis, based on the lightweight design concept of the semi-integrated HYMER ML-T. Among its high points are the extensive standard safety package with state-of-the-art electronic stability control, sports-style safety chassis and optionally available 7G-Tronic automatic transmission. The living area is level throughout, from the cab to the rear. The handy 142-litre capacity Smart-Tower refrigerator is available as standard.



Characteristics

Weight: 3.500 - 4.200 kg
Length: 6,39 - 7,80 m
Width: 2,22 m
Height: 2,90 m
Berths: 4 - 5

Highlights

Seitz S7 framed windows
Light, slender and manoeuvrable thanks to an outside width of 2.22 m
GRP lightweight floor with XPS-insulation
Single-level living area floor
All tanks and service installations insulated and heated
Huge garage with a loading height of up to 121 cm

Exterior view & stowage compartments



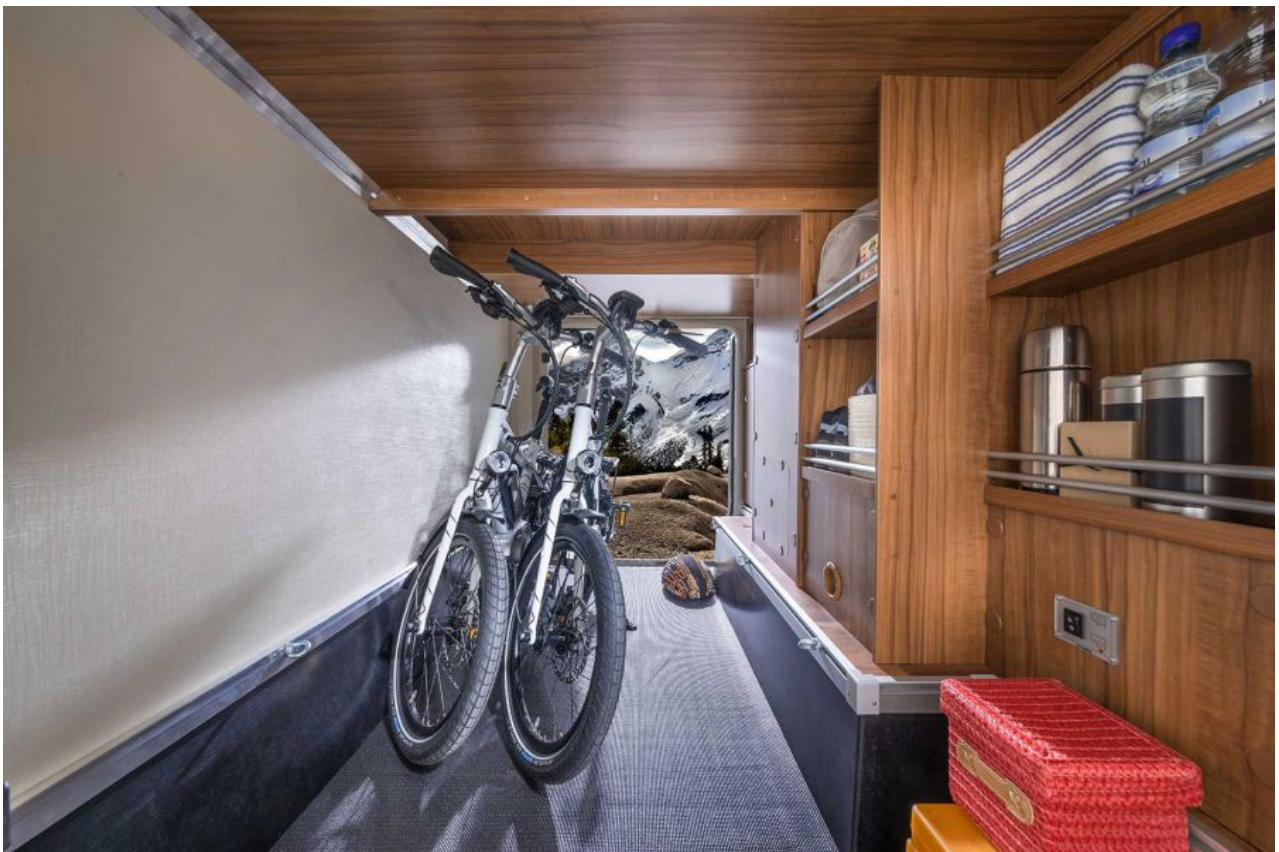


Stowage compartments

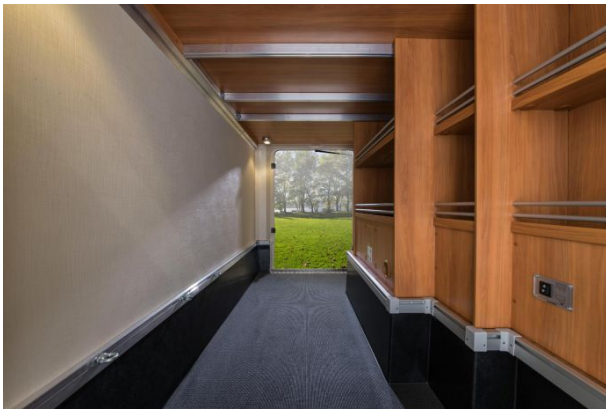


Two doors as standard

With a standard loading capacity of 350 kg (optionally upgradable to 450 kg), the large garage provides safe storage for a substantial amount of luggage.



The roomy garage of the HYMER ML-I 580 will take two bicycles and much more camping equipment besides.



The left and right garage doors (viewed in the direction of travel) are a standard feature, allowing easy loading of the rear garage. The side compartments offer plenty of space for smaller luggage items.



Power package

The Hymermobil ML-I can be optionally equipped with a highly efficient power package comprising two additional, easily accessible batteries including an extra charger in the exterior locker door.



121 cm loading height

The huge garage doors with an internal loading height of 121 cm are unique in the motorhome sector, representing an unbeatable advantage over rival vehicles.



The on-board electronics and storage compartment under the seating group are readily accessible via an exterior locker door.



The electric waste water drainage mechanism is accessible directly from the garage as standard.

The illustrations are for example purposes only, and may feature optional extras, accessories and vehicle decorations which are not supplied as standard. Optional extras are included in the current price list and available at the extra cost indicated. We reserve the right to modify the equipment or make product improvements not shown in the photos during the lifecycle of the model ranges. We cannot accept any liability for content errors and modifications.

Living room

A perfectly coordinated living space.



The layout of the Hymermobil ML-I 620 offers not only an en-suite bathroom, full-length wardrobe and corner kitchen with large refrigerator, but also a cosy seating group with facing bench seats - all within a length of 7.80 m.



Ample seating

Up to 5 people can be accommodated in the standard semi-dinette of the HYMER ML-I 580 thanks to a table with swivel extension. Our illustration shows the smart comfort seating area in the pear wood furniture finish and Santorin fabric combination.



Handy all-rounders

The height and angle-adjustable swivel lounge seats in the cab are upholstered in the same fabric design (in this case

Santorin) as the living area. The exceptionally comfortable Aguti Ergoflex pilot seats are ideal for settling down to watch TV and for relaxed driving.



The generous living area of the Hymermobil ML-I 580 – pictured here in the standard Trentino pear wood furniture finish combined with the Santorin fabric design – has an open, welcoming feel.



Light and space

The standard HYMER panoramic roof vent with LED lighting above the seating group lets plenty of daylight into the living area, making it bright and cosy.



Comfy seating

The Hymermobil ML-I boasts an optionally available L-shaped seating area in the standard Castello fabric combination. Access to the seating is improved enormously by the 360-degree swivel table.



Snug living area

The elegantly designed seating area featuring the Palatino Cream furniture finish and Castello fabric combination lends a civilised air to the ML-I 620 interior. Pictured here is the optionally available L-shaped seating area.



A flatscreen bracket and radio/TV point including loudspeakers, radio and DVB-T antenna are pre-installed as standard. A 19-inch LED flatscreen can also be supplied as an optional extra.



The standard table in the seating group of the Hymermobil ML-I can be enlarged quickly and easily via a swivel tabletop extension.

The illustrations are for example purposes only, and may feature optional extras, accessories and vehicle decorations which are not supplied as standard. Optional extras are included in the current price list and available at the extra cost indicated. We reserve the right to modify the equipment or make product improvements not shown in the photos during the lifecycle of the model ranges. We cannot accept any liability for content errors and modifications.

Sleeping room

A linear aesthetic coupled with modern charm.



Comfy sleeping oasis

The comfortable single beds in the ML-I 580 also come in a low-level version with easier access to the sleeping area. As an option, the single beds can be joined with an extra cushion to make a large lounging area with ladder access.



Comfortable fold-down bed

The ML-I has a very handy and comfortable 150 cm-wide fold-down bed above the cab which lowers right down and is firmly supported, ensuring much easier access to the bed area.



The Hymermobil ML-I 580, seen here in the standard Trentino pear wood furniture finish, is also available with lower-level beds on request.



The manually lowerable fold-down bed allows ample headroom so you can also sit up in bed. It is easily reached via a ladder, and can also be optionally supplied with an electric lowering mechanism.



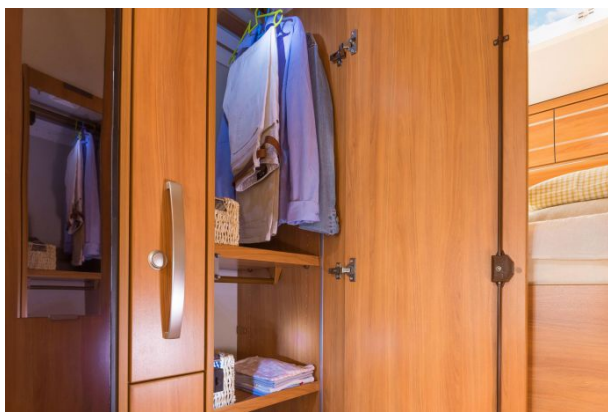
Restful sleep

The optional HYMER comfort sleeping system with high-quality disk-spring bed frames is available for both front and rear beds (except in the ML-I 630) and maximises the benefits of the multi-zone cold foam mattresses. Each area of the body is supported with the ideal counter-pressure.



Flexible storage

The full-length wardrobe, which comes with two hanging rails and adaptable shelves, provides plenty of space for your holiday wear.



The Hytermobil ML-I 560 boasts two large wardrobes. One full-length, 50 cm-wide wardrobe is located in front of the rear bed on the right in the direction of travel.



Facing it on the left in the direction of travel is a second, 36 cm-wide wardrobe.



A fixed rear transverse bed in the Hytermobil ML-I 540 and Hytermobil ML-I 560 offers a large reclining surface of 200 x 145/122 cm and 200 x 148 cm (L x W) respectively.



The shelf compartment at the head end of the twin beds can be used to store any items requiring quick bedside



The Hytermobil ML-I 540 - despite an overall length of just 6.39 m - also boasts a full-length, 30 cm-wide

access.

wardrobe.

The illustrations are for example purposes only, and may feature optional extras, accessories and vehicle decorations which are not supplied as standard. Optional extras are included in the current price list and available at the extra cost indicated. We reserve the right to modify the equipment or make product improvements not shown in the photos during the lifecycle of the model ranges. We cannot accept any liability for content errors and modifications.

Kitchen

A perfectly coordinated living space.



You can even cook up a small menu with minimal effort on the standard three-burner gas hob.



Large work surface

Work and storage space galore: the large, flexibly partitioned drawers allow safe storage of all your kitchen utensils. An additional fold-down worktop gives you more space to work with around the hob.



Smart-Tower refrigerator

Despite its narrow design, the standard Smart-Tower refrigerator has an impressive 142-litre capacity, plus a 15-litre freezer compartment, and always looks tidy thanks to a well-organised interior.



Intelligent storage

The B 778 SL is equipped with a full-length kitchen cabinet with larder unit which makes an excellent storage facility for provisions and kitchen utensils.



Generous side kitchen

The variously sized, flexibly partitioned kitchen drawers and readily accessible overhead lockers are highlights of the large, well-planned side kitchen. Next to the refrigerator is a full-length larder unit with plenty of space for groceries.



You can keep spices, bottles and all kinds of provisions well organised in the full-length larder unit.



The high-quality corner kitchen in the Hymermobil ML-I 620 and 630 is also optionally available with an oven plus grill.



Extendible work surface

The modern kitchen of the ML-I with its large drawers and numerous overhead lockers allows plenty of space for all sorts of kitchen utensils. The work surface can be extended in a flash, giving you extra space to put things.

The illustrations are for example purposes only, and may feature optional extras, accessories and vehicle decorations which are not supplied as standard. Optional extras are included in the current price list and available at the extra cost indicated. We reserve the right to modify the equipment or make product improvements not shown in the photos during the lifecycle of the model ranges. We cannot accept any liability for content errors and modifications.

Bathroom

A linear aesthetic coupled with modern charm.



Versatile bathroom

The attractive bathroom in the ML-I 620 can be separated off completely from the living area.



Separable function

Both the washroom/toilet and shower area can be used separately.



No more wet feet!

The separate shower screen has multiple advantages: you can open it for more freedom of movement in the bathroom or close it to keep things dry outside. The bench toilet makes the bathroom really easy to clean.



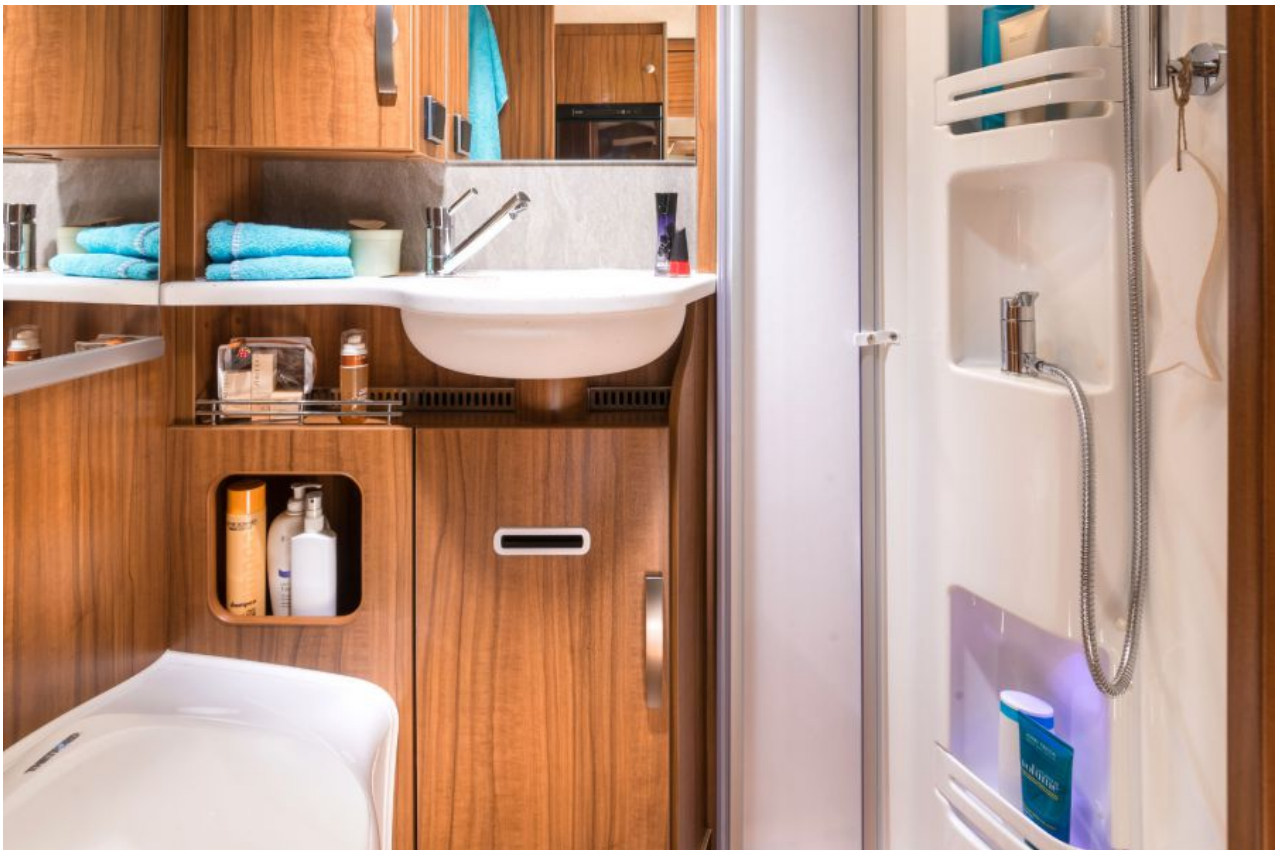
Elegant washbasin

The elegant Cool Glass washbasin is an aesthetic highlight, consisting of a premium-grade material made from pressed glass powder with the look and feel of fine porcelain.



Secure shelves

The generous, well-organised bathroom cabinet offers bags of storage space. HYMER fits tensioning straps to the shelves as standard to keep everything securely in its proper place.



Spacious and modern

The comfort bathroom in the new Hymermobil ML-I boasts a separate, spacious shower cubicle with full-size tray, a modern bench toilet and a generous standing area.



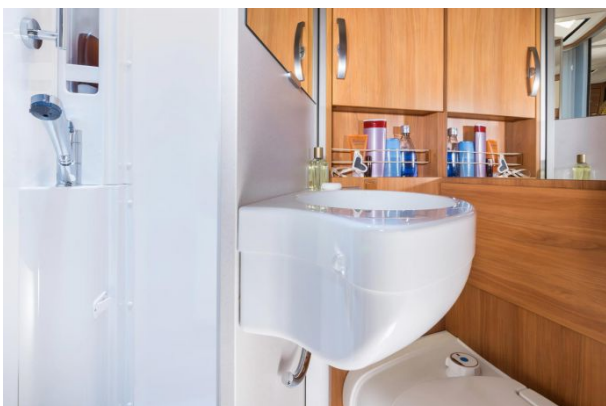
Shower gel, shampoo, etc. can be placed securely in the receptacles provided.



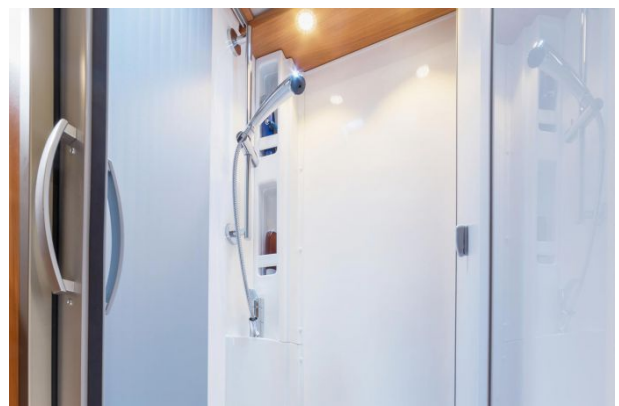
A high-quality wooden panel grating can be optionally supplied for the shower tub.



The high-quality shower attachment gives you the same convenience as at home.



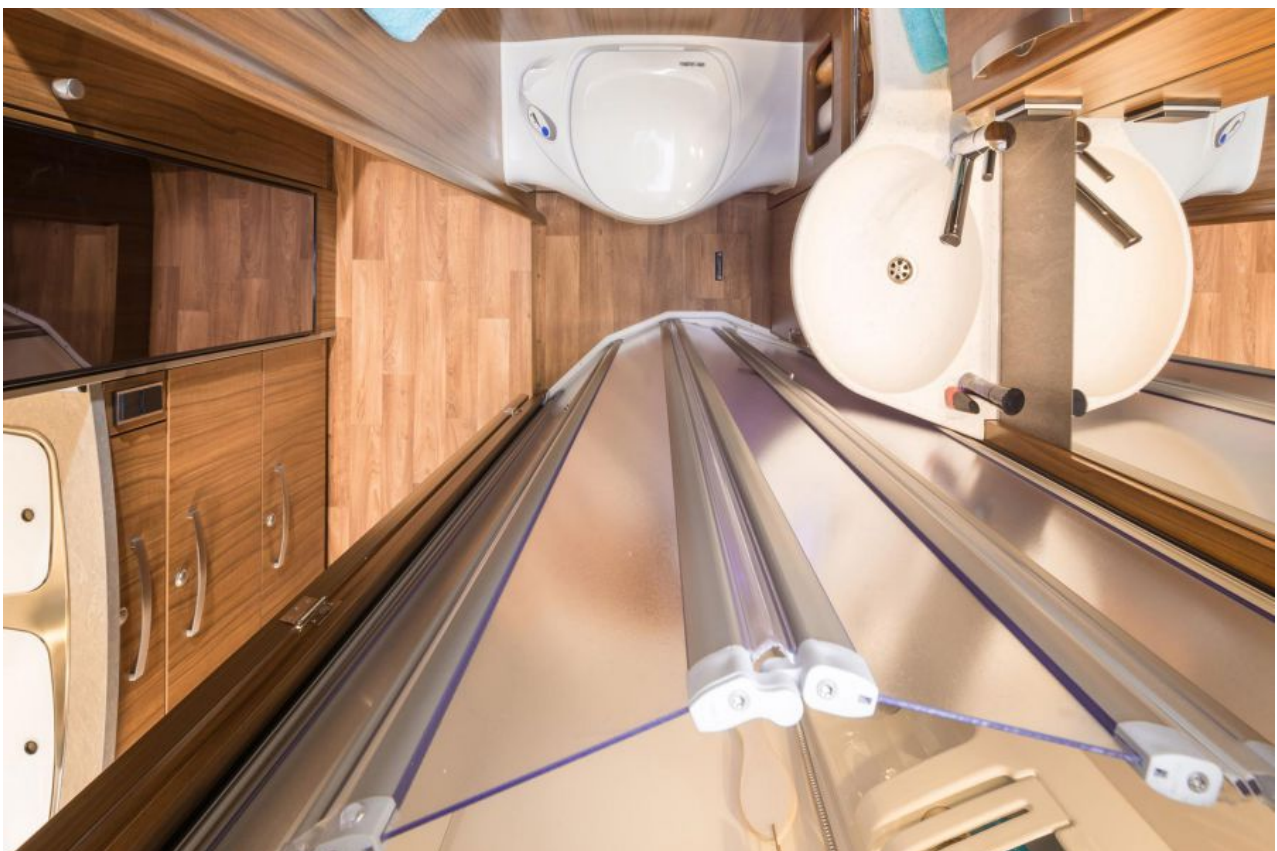
The Hyermobil ML-I 540 has a Vario-Premium bathroom in the form of an open washroom/toilet combo.



Practical holders in the shower provide space for shampoo and shower gel.



A large bathroom cabinet and numerous shelf compartments provide plenty of storage space in the bathroom. Elastic tensioning straps keep your items in place at all times.



No more wet feet!

The separate shower screen in the ML-I 560 und 580 has multiple advantages: you can open it for more freedom of movement in the comfort bathroom or close it to keep things dry outside.

The illustrations are for example purposes only, and may feature optional extras, accessories and vehicle decorations which are not supplied as standard. Optional extras are included in the current price list and available at the extra cost indicated. We reserve the right to modify the equipment or make product improvements not shown in the photos during the lifecycle of the model ranges. We cannot accept any liability for content errors and modifications.

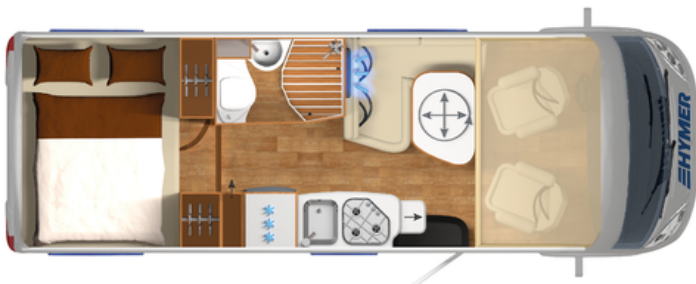
Layouts & Data



HYMER ML-I 540

Measure	639x222
---------	---------

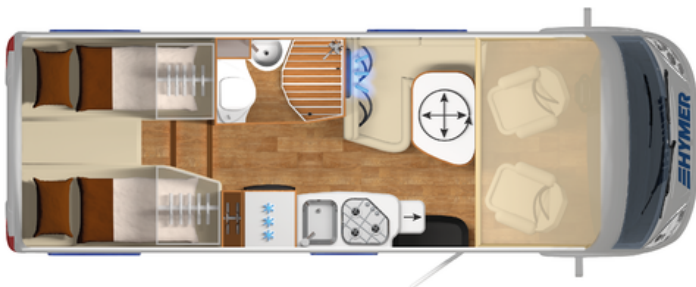
Berths	4
--------	---



HYMER ML-I 560

Measure	699x222
---------	---------

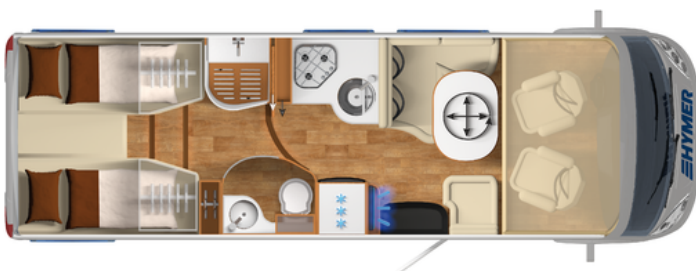
Berths	4
--------	---



HYMER ML-I 580

Measure	699x222
---------	---------

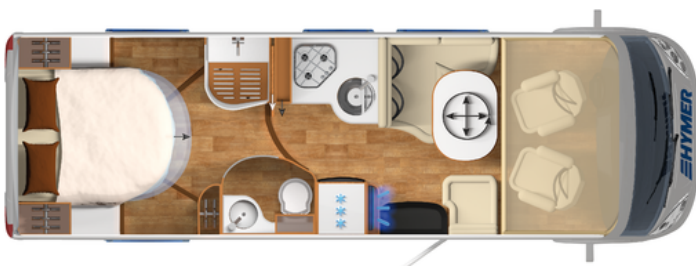
Berths	4
--------	---



HYMER ML-I 620

Measure	780x222
---------	---------

Berths	4 + 1 (SA)
--------	------------



HYMER ML-I 630

Measure	780x222
---------	---------

Berths	4 + 1 (SA)
--------	------------

Standard equipment



Truma heater

The integrated 6,000 W Truma Combi 6 heater effortlessly maintains a cosy temperature throughout the interior even when it's freezing outside (depending on model).



No thermal bridges

The high-quality Seitz S7 framed windows are fitted with acrylic double glazing for optimal thermal insulation. The powder-coated aluminium frame is particularly lightweight and sturdy and is also equipped with an insulating layer to protect against thermal bridging.



Energy-saving LEDs

The interior lighting throughout the vehicle features LED technology as standard. This cuts energy consumption by 3/4 and gives you hours of extra battery life. Since LEDs don't get hot, this also improves fire and accident safety.



Secluded on tour.

Thanks to pre-installation of the radio with loudspeakers in the sleeping and living area, wiring, socket and radio aerial ex works.



Level living area

All Hyermobil ML-I layouts have a level floor throughout the living area, unimpeded by raised sections. That way none of the headroom is lost and there are no obstacles to trip over, especially in the dark.



Natural light

The large crank skylight in the living area lets in plenty of direct daylight to create a pleasant, natural ambience in the interior of the vehicle. When it gets dark, uniform lighting is provided by the integrated LED spotlights.



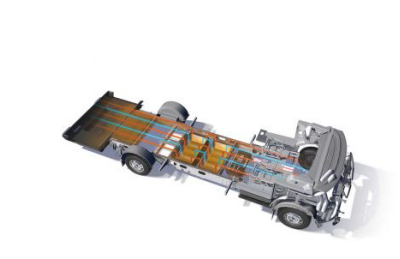
Exterior lighting

The high-power LED awning light with rain deflector is also part of the standard package. It lights up a wide area outside the entrance door so you can enter the vehicle safely in the dark.



Protection from below

The indestructible GRP underbody gives the vehicles perfect protection against weather damage. Stone damage, grit and dirt are likewise kept at bay - a solid and lasting foundation for the entire service life of your motorhome.



The vehicle for winter sports fans

Our motorhomes offer a hassle-free all-round package for winter sports enthusiasts: insulated service installations and tanks, heated dashboard and exterior locker compartments, winter air vents in

the windows and seating areas and a warm air supply under the cab seats. As for the exterior, the GRP floor provides effective protection against grit and salt (depending on model).



Cosy warmth

Installed as standard, the 4,000 W Truma Combi 4 heater effortlessly generates enough warmth to ensure a cosy temperature throughout the interior even when it's well below freezing outside.

Basis

Multifunktionslenkrad mit Reiserechner

Heavy duty alternator 14 V / 180 A

Suspended exterior mirror, in vehicle finish, electrically heated and adjusted, incl. wide-angle mirror

Driver- and passenger airbag (Please consider: On passenger airbag it is not allowed, to fix child seats with restraint system on passenger seat.)

ABS (anti-lock braking system) / ASR (anti slip control) / EBV (electronic brake force distribution) and ESP (electronic stability program)

Mercedes-Benz 313 CDI, 95 KW/ 129 BHP, Euro 6

Mud flaps on front and rear axle

Hillstart assistant

Comfort drive suspension

Daytime driving light integrated in HYMER head lamps

Superstructure

HYMER frosted glass roof vent 40 x 40 cm with pleated darkening blind and fly screen in bathroom

GFK Leichtbauboden mit XPS-Isolierung

LED awning light with rain deflector

Masking strip in brushed Titanium filling

Large garage door right and left on the direction of travel

Folding darkening system in driver's cabin made of high quality pleated material

Living area entrance door with window and inner shell

HYMER Panorama roof vent 80 x 50 cm with LED illumination in living area

HYMER clear glass roof vent 40 x 40 cm with pleated darkening blind and fly screen over rear bed(s)

Appealing, modern exterior visual appearance due to round accumulative form in aluminium smooth metal

Garage load capacity till 350 kg (optional 450kg)

Front spoiler white

Electric entrance step, 1-stepped

Optimal Insulating due to approved PUAL-construction with foamed walls and foamed roof (35 mm roof- and wall thickness) and frame windows

Hinged window in rear on right in direction of travel with darkening blind and flyscreen

Outfitting

Pull down bed manual lowerable

Aguti Ergoflex pilot seats in living area fabric, swivel, height and tilt adjustable

Luxury table: swivels through 360°, lengthwise and across slidable with solid wood frame (only in connection with L-shaped seating group)

Seating group in front with 2 integrated 3-point belts

Multi zone cold foam mattress incl. high quality mattress overlay (knit fabric) for ventilation in rear

Heating / A/C / On-board systems

Complete interior illumination in LED

Truma panel CP plus

Boosted battery 12 V 95 Ah AGM

Electric waste water tank drain

Waste water tank 100 l, insulated and heated

New heating concept for driver's cabin with boosted warm air heating incl. heated dash board when vehicle is not driving

Heating Combi 6 with warm air system

Fresh water tank 20 / 120 l, insulated and heated

Multimedia

Radio-/ TV provision incl. 12 V socket, surface speaker in rear bed room, radio and DVB-T antenna

Flat screen bracket

Kitchen

Servo-Soft move in kitchen area

Extra wide, free distinguishable kitchen drawers

Smart-Tower refrigerator 142 l

The illustrations are for example purposes only, and may feature optional extras, accessories and vehicle decorations which are not supplied as standard. Optional extras are included in the current price list and available at the extra cost indicated. We reserve the right to modify the equipment or make product improvements not shown in the photos during the lifecycle of the model ranges. We cannot accept any liability for content errors and modifications.

Optional extras



Restful sleep

The HYMER comfort sleeping system with high-quality disk-spring bed frames maximises the benefits of the multi-zone cold foam mattresses. Each area of the body is supported with the ideal counter-pressure for snug and restful sleep.



7-speed transmission

The optionally available 7G- Tronic automatic transmission guarantees a smooth drive. The seven forward gears prevent abrupt speed changes when shifting up and down to keep the engine within a fuel-efficient rpm range.



Water heating

The Alde hot water heating system supplies a very pleasant warmth and is equipped with convectors at various points including the dashboard. The system is also equipped as standard with an energy- saving heat exchanger.



Power package

The Hymermobil ML-I can be optionally equipped with a highly efficient power package comprising two additional, easily accessible batteries including an extra charger in the exterior locker door.

Basis	540	560	580	620	630
Mercedes-Benz 316 CDI, 120 KW/ 163 BHP, Euro 6	○	○	○	○	○
Mercedes-Benz 319 CDI, 141 KW/ 190 BHP, Euro 6	○	○	○	○	○
Four wheel drive shiftable	-	○	○	-	-
Uprating to 3,8 t	-	○	○	-	-
Uprating to 3,88 t	○	○	○	-	-
Uprating to 4,05 t	-	○	○	-	-
Uprating to 4.2 t	○	○	○	●	●

Static cornering light including foglights	<input type="radio"/>	<input type="radio"/>	<input type="radio"/>	<input type="radio"/>	<input type="radio"/>
Foglights	<input type="radio"/>	<input type="radio"/>	<input type="radio"/>	<input type="radio"/>	<input type="radio"/>
Tempmatic air conditioning system	<input type="checkbox"/>	<input type="checkbox"/>	<input type="checkbox"/>	<input type="checkbox"/>	<input type="checkbox"/>
Rear axle full air suspension	<input type="radio"/>	<input type="radio"/>	<input type="radio"/>	<input type="radio"/>	<input type="radio"/>
Cruise Control (Mercedes)	<input type="checkbox"/>	<input type="checkbox"/>	<input type="checkbox"/>	<input type="checkbox"/>	<input type="checkbox"/>
Automatic transmission 7G-TRONIC	<input type="radio"/>	<input type="radio"/>	<input type="radio"/>	<input type="radio"/>	<input type="radio"/>
Converter transmission gear	-	<input type="radio"/>	<input type="radio"/>	<input type="radio"/>	<input type="radio"/>
100 l fuel tank	-	<input type="radio"/>	<input type="radio"/>	<input type="radio"/>	<input type="radio"/>
Tow bar	<input type="radio"/>	<input type="radio"/>	<input type="radio"/>	<input type="radio"/>	<input type="radio"/>
4 x 16 inch alloy wheels	<input type="radio"/>	<input type="radio"/>	<input type="radio"/>	<input type="radio"/>	<input type="radio"/>
Spare wheel (16 inch steel) incl. mounting bracket in rear stowage compartment	<input type="radio"/>	<input type="radio"/>	<input type="radio"/>	<input type="radio"/>	<input type="radio"/>
Stollenreifen BF-Goodrich All Terrain 245/75 R 16 (inkl. Tachoangleichung)	-	<input type="radio"/>	<input type="radio"/>	-	-
Tyre pressure monitoring sensors	<input type="radio"/>	<input type="radio"/>	<input type="radio"/>	<input type="radio"/>	<input type="radio"/>
Seat heating for driver's and passenger's seat	<input type="radio"/>	<input type="radio"/>	<input type="radio"/>	<input type="radio"/>	<input type="radio"/>
Central locking for driver- and entrance door and garage door	<input type="radio"/>	<input type="radio"/>	<input type="radio"/>	<input type="radio"/>	<input type="radio"/>
Body	540	560	580	620	630
Driver's door with electric window and illuminated entry	<input type="checkbox"/>	<input type="checkbox"/>	<input type="checkbox"/>	<input type="checkbox"/>	<input type="checkbox"/>
Aluminium smooth plate Carrara White	●	●	●	●	●
Exterior finish: Sierra grey metallic	<input type="radio"/>	<input type="radio"/>	<input type="radio"/>	<input type="radio"/>	<input type="radio"/>
Frontscheibenerwärmung elektrisch	<input type="radio"/>	<input type="radio"/>	<input type="radio"/>	<input type="radio"/>	<input type="radio"/>
Fantastic Vent above kitchen	<input type="radio"/>	<input type="radio"/>	<input type="radio"/>	<input type="radio"/>	<input type="radio"/>
HYMER panorama roof vent 80 x 50 cm, double-glazed over rear bed	<input type="radio"/>	<input type="radio"/>	<input type="radio"/>	<input type="radio"/>	<input type="radio"/>
Roof vent 40 x 40 cm in front with pleated darkening blind and insect screen	<input type="radio"/>	<input type="radio"/>	<input type="radio"/>	<input type="radio"/>	<input type="radio"/>
Hinged window in rear on left when viewed in the direction of travel including blind and fly screen	●	<input type="radio"/>	●	●	●
Hinged window in rear on right when viewed in the direction of travel including blind and fly screen	<input type="radio"/>	●	●	●	●
Comfort habitation door with window	<input type="radio"/>	<input type="radio"/>	<input type="radio"/>	<input type="radio"/>	<input type="radio"/>
Awning Omnistor with adapter, case in white or silver, 3,5 m	<input type="radio"/>	-	-	-	-
Awning Omnistor with adapter, case in white or silver, 4.5 m	-	<input type="radio"/>	<input type="radio"/>	<input type="radio"/>	<input type="radio"/>

Awning Omnistor with adapter, case in white or silver, 5 m	-	-	-	○	○
Electric entrance step at driver's door (extends automatically when driver's door is opened)	○	○	○	○	○
Bicycle rack for 3 bicycles	○	○	○	○	○
Pull-out motorcycle rack, may also be used for 2 bicycles	○	○	○	○	○
Security lock for living area entrance door	○	○	○	○	○
Security lock for driver's door	○	○	○	○	○
Insulating mat for windscreen, exterior	□	□	□	□	□
Insulating glazing for driver's cabin side windows and driver's door	□	□	□	□	□
Luxury corner steadies, rear x 2	○	○	○	○	○
Roof rails with rear ladder and ribbed aluminium roof panel	○	○	○	○	○
GRP roof coating	○	○	○	○	○
Outfitting	540	560	580	620	630
Comfort L-shaped seating group with lounge upholstery, table displaceable lengthwise/transverse with real wood frame and 2 integrated 3-point seat belts	○	○	○	○	○
Electric roller shutter in front	○	○	○	○	○
Wooden slats in the shower	○	○	○	○	○
Folding wood seat in the shower	-	-	-	○	○
Bed conversion for L-shaped seating group / seating group incl. additional upholstery and lowerable table	-	-	-	○	○
Additional cushioning between the longitudinal single beds	-	-	○	○	-
Additional cushion for bed extension (10 cm)	-	-	-	-	○
Single longitudinal beds in rear low construction with garage including garage door on right and left	-	-	◆	◆	-
Ceramic toilet Thetford	-	-	-	○	○
Flyscreen roller blind on entrance doors	□	□	□	□	□
Front stowage cupboard (incl. overhead locker in front) instead of pull-down bed	○	○	○	○	○
Sleeping system with cup slatted frame for pull-down bed(s)	○	○	○	○	○
Sleeping system with cup slatted frame for rear bed(s)	○	○	○	○	-
Electrically activated pull-down bed	○	○	○	○	○
External shower in garage	○	○	○	○	○

Insulating mat for driver's cabin footwell	<input type="checkbox"/>	<input type="checkbox"/>	<input type="checkbox"/>	<input type="checkbox"/>	<input type="checkbox"/>
Interior design	540	560	580	620	630
Wood finish Trentino Birnbaum	●	●	●	●	●
Möbelwelt Palatino creme	○	○	○	○	○
Wood finish trim for dashboard	○	○	○	○	○
Cosy package: 2 cushions and bedspread for rear bed(s)	○	○	○	○	○
Fabric combination Castello, Millau, Pico, Santorin, Varuna	●	●	●	●	●
Fabric combination Paradiso (Eco Tech Material)	○	○	○	○	○
Textile leather -/ fabric combination Cremissimo, Etna, Martinique, Santana	○	○	○	○	○
Leather- / fabric combination Tobago	○	○	○	○	○
Pebble leather finish	○	○	○	○	○
Stilwelt Aureus (bestehend aus: Stoffkombination Aureus, Möbelwelt Palatino creme, Raffrollo Wohnbereich, Kuschelpaket und Tischdecke)	○	○	○	○	○
Carpet Roma/Samara for driver's cabin and living area, supplied loose	○	○	○	○	○
Heating/ A/C/ On-board systems	540	560	580	620	630
Thitronik alarm system for driver's door, for living area door, garage/storage room dorrs or flaps and windows	○	○	○	○	○
Ambiance lighting	○	○	○	○	○
External gas socket with shutoff tap	○	○	○	○	○
Additional sockets 5x230V/2x12V/2xUSB	<input type="checkbox"/>	<input type="checkbox"/>	<input type="checkbox"/>	<input type="checkbox"/>	<input type="checkbox"/>
Roof air conditioning Truma Aventa Comfort	○	○	○	○	○
SOG toilet vent	○	○	○	○	○
Second living area battery (95 Ah AGM) incl. additional charger 18 A	<input type="checkbox"/>	<input type="checkbox"/>	<input type="checkbox"/>	<input type="checkbox"/>	<input type="checkbox"/>
Truma Duo Control CS with automatic changeover and EisEx	○	○	○	○	○
Truma Combi 6 gas heating with 1800 W electric bar heater	○	○	○	○	○
ALDE water heater (including booster)	<input type="checkbox"/>	<input type="checkbox"/>	<input type="checkbox"/>	<input type="checkbox"/>	<input type="checkbox"/>
Hot water underfloor heating	<input type="checkbox"/>	<input type="checkbox"/>	<input type="checkbox"/>	<input type="checkbox"/>	<input type="checkbox"/>
Heat exchanger for ALDE water heater	<input type="checkbox"/>	<input type="checkbox"/>	<input type="checkbox"/>	<input type="checkbox"/>	<input type="checkbox"/>
Webasto diesel heating for driver's cabin	○	○	○	○	○

Multimedia	540	560	580	620	630
Flat screen LED 19 inch with integrated loudspeakers, remote, DVD tape deck, HYMER Smart-Multimedia-System (DVB-T/C, DVB-S2)	○	○	○	○	○
Second LED-TV in the sleeping area: 19 inch TFT with integrated loudspeakers, DVD tape deck, DVB-T/C, DVB-S2, cabling and wall bracket	○	○	○	○	○
Car radio with CD/MP3 player	○	○	○	○	○
Car radio DAB+ with CD-/MP3-Player	○	○	○	○	○
Reversing video system (colour) w 4" monitor and single camera	○	○	○	○	○
Double DIN navigation system incl. DVD player, twin-lens backup camera, and shutter	○	○	○	○	○
Caro digital satellite antenna Vision (flat antennas without receiver)	○	○	○	○	○
Oyster 85 digital Vision satellite antenna , without receiver	○	○	○	○	○
Kitchen	540	560	580	620	630
Cooker and oven combination Thetford Aspire	○	○	○	-	-
Oven Thetford integrated in kitchen	-	-	-	○	○
Packages	540	560	580	620	630
HYMER ML-I Comfort-Line-Package	○	○	○	○	○
HYMER Power-Package	○	○	○	○	○
HYMER ML-I ALDE-Arktis- Package	○	○	○	○	○

● = Standard Equipment ○ = Optional Equipment □ = Optional Equipment included in pack
 ◆ = Available upon request (No cost) - = Not available

The illustrations are for example purposes only, and may feature optional extras, accessories and vehicle decorations which are not supplied as standard. Optional extras are included in the current price list and available at the extra cost indicated. We reserve the right to modify the equipment or make product improvements not shown in the photos during the lifecycle of the model ranges. We cannot accept any liability for content errors and modifications.

Furniture finish, fabric design & carpets

The interior at a glance.

Textil



Castello



Millau



Pico



Textil-Stilwelt Aureus

(Optionale Sonderausstattung)



Santorin



Varuna

Echtleder / Textil



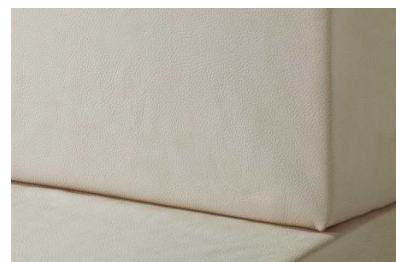
Tobago

(Optionale Sonderausstattung)



Paradiso

(Optionale Sonderausstattung)



Leder Kiesel

(Optionale Sonderausstattung)

Textilleder / Textil



Cremissimo

(Optionale Sonderausstattung)



Etna

(Optionale Sonderausstattung)



Martinique

(Optionale Sonderausstattung)



Santana

(Optionale Sonderausstattung)

Teppichböden



Roma

(Optionale Sonderausstattung)



Samara

(Optionale Sonderausstattung)

Holzdekore



Palatino Apfel



Trentino Birnbaum

Hymermobil ML-I – now also available as an off-road version.

The Hymermobil ML-I is the first fully integrated vehicle under 3.5 tons available with four-wheel drive.

Whether rough terrain, poor-quality road surfaces or winter weather – thanks to the new drive concept, extreme conditions are no longer an obstacle for the Hymermobil ML-I, even when travelling on unpaved ground.

Activating the front axle ensures a more efficient and even transmission of the engine power. This increases the traction and, consequently, the tractive force, which makes for a smoother drive.

The upgradable four-wheel drive system has managed to successfully combine the safety of a premium motorhome with the freedom of a four-wheel drive vehicle.

Please note that we do not offer the 4x4 for the Hymermobil ML-I 620 and the 630 layout.

Driver assistance systems for increased safety and relief for the driver.

Safety not only of extreme importance at HYMER; it is also a top priority at Mercedes-Benz right from development and design, placing the transporters with the iconic star emblem among the safest of their class. Thanks to its safety packages that are unique in the van segment, the Sprinter no longer has to hide behind any passenger car. In many cases, the numerous standard or optional safety features assist in reducing the accident risk as well as increasing driving comfort.

Standard assistance systems:

World innovation: The crosswind assistant on the HYMER ML-T as standard.

The Mercedes Sprinter is the first van to be equipped with a crosswind assistant as standard. From January 2015, the HYMER ML-T will be the first motorhome to be equipped with this crosswind assistant as standard.

With its sensors, the crosswind assistant promptly detects forces impacting on the vehicle as a result of side wind gusts, whether on a bridge or when overtaking a HGV, and assists the driver in remaining in their lane. When travelling at speeds of 80 km/h and above, the assistant corrects the course of the vehicle by automatic braking interventions on the wheels located on the side of the vehicle facing the wind. Consequently, the crosswind assistant is able to prevent inappropriate reactions and increase the driver's feeling of safety.

By the way, the crosswind assistant can be obtained as a retrofit solution very easily via a software update for all HYMER ML-T vehicles delivered prior to January 2015. Simply contact your HYMER dealer for information regarding concrete possibilities and modalities of the professional retrofitting.

Advantage: The driver experiences a noticeable relief. Their feeling of safety and comfort is increased and inappropriate driver reactions are prevented during gusts. Furthermore, the driver is also made aware of the system intervention via a warning light on the instrument cluster. The crosswind assistant is activated at speeds of 80 km/h and above.

ADAPTIVE ESP®: Stability in milliseconds.

The ADAPTIVE ESP® is the latest handling control system which takes the loading condition of the vehicle into account. It actively engages in certain dangerous driving situations by means of specific braking interventions to individual wheels and adjusts the engine output as needed in order to help the driver master the critical dangerous situations. It combines the functions of the anti-lock braking system (ABS), traction control system (TCS), electronic brake force distribution (EBD), brake assist system (BAS) and the hill start assist (HSA) whilst also equipping the vehicle with an extra driving stability assistant.

Attention: The ADAPTIVE ESP® cannot overdrive the laws of driving physics.

For instance, the ADAPTIVE ESP® cannot prevent skidding as a result of aquaplaning. Not even the ADAPTIVE ESP® is able to prevent an accident if a driver exceeds the physical limits.

