

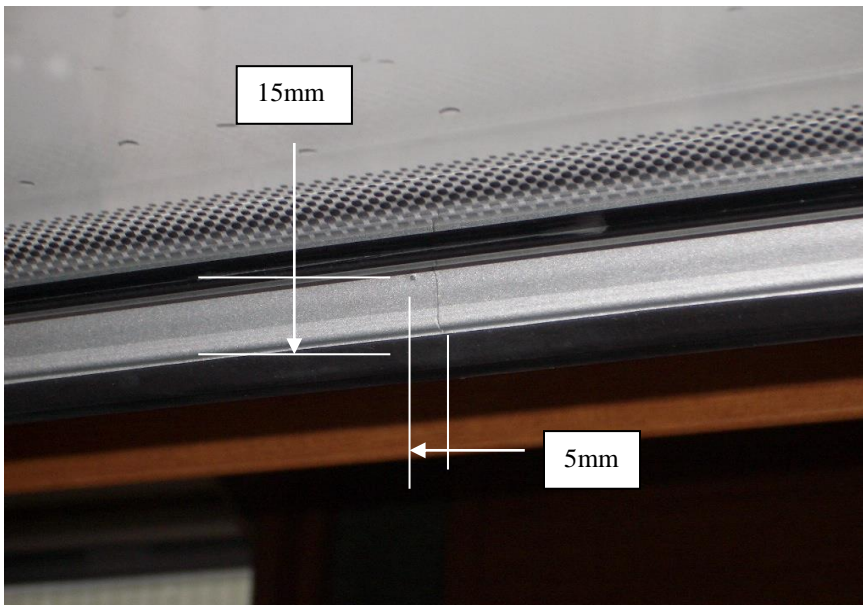
## Polyvision Window - Advised Rework Instruction



### Overall Repair Issue :

Area 1 - Frame joint - needs extra sealant within the aluminium profile

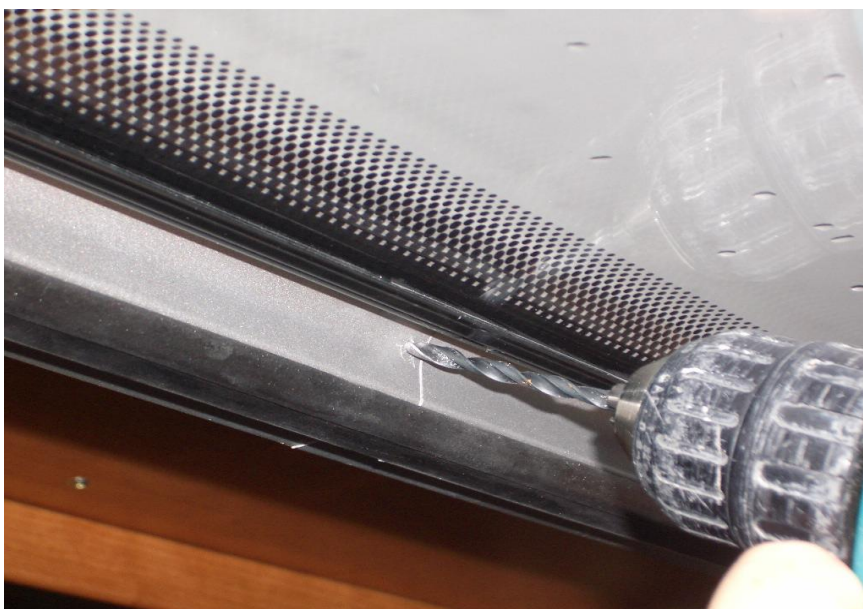
Area 2 - Bottom of frame - needs drain holes installing



### Step 1.

Open Window to highest point.

Centre punch the frame approx 5mm from the frame joint and 15mm up from the bottom of the aluminium profile.



### Step 2.

At an angle of approx 45 degrees, drill a 4mm diameter hole in the aluminium (piercing the outer frame only).

PLEASE NOTE - Take care to not damage the acrylic window panel or the aluminium frame.



### **Step 3.**

Using a sealant gun, pump **Soudal Sealant (1021449)** into the hole, to fill the void behind.

PLEASE NOTE - This should take approx 5 depressions of the trigger (or until backpressure in the gun is felt).

Wipe off any excess sealant using a suitable cleaner,(Eco cleanse)



### **Step 4.**

At the same area on the frame, carefully pull the window rubber out of it's channel. (Downward direction)

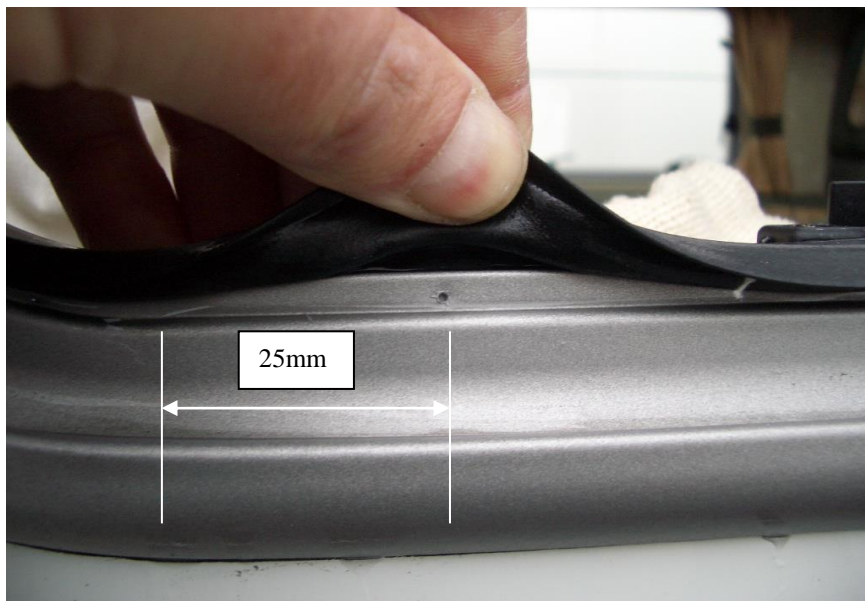
Half fill the channel with the same sealant, over a length of 30mm, directly over the joint



### **Step 5.**

Starting directly at the joint, carefully press the rubber back into it's channel.

Using a suitable cleaner, wipe off any excess sealant.



### **Step 6.**

Moving to the bottom of the frame, centre punch the frame as indicated approx 25mm from the end of the radius at **BOTH** bottom corners.



### **Step 7.**

At these points, drill a 4mm diameter hole, holding the drill at 90°, through the aluminium frame and into the rubber.

PLEASE NOTE - Take care not to damage the aluminium frame and the rubber.



### **Step 8.**

Carefully lift the rubber from it's channel and cut a 10mm (approx) section out of it's underneath.

PLEASE NOTE - This is best done using wire cutters or snips.

Once completed, press the rubber back into it's channel.

**REWORK COMPLETE - REPEAT FOR EACH FRAMED WINDOW APPLICABLE.**